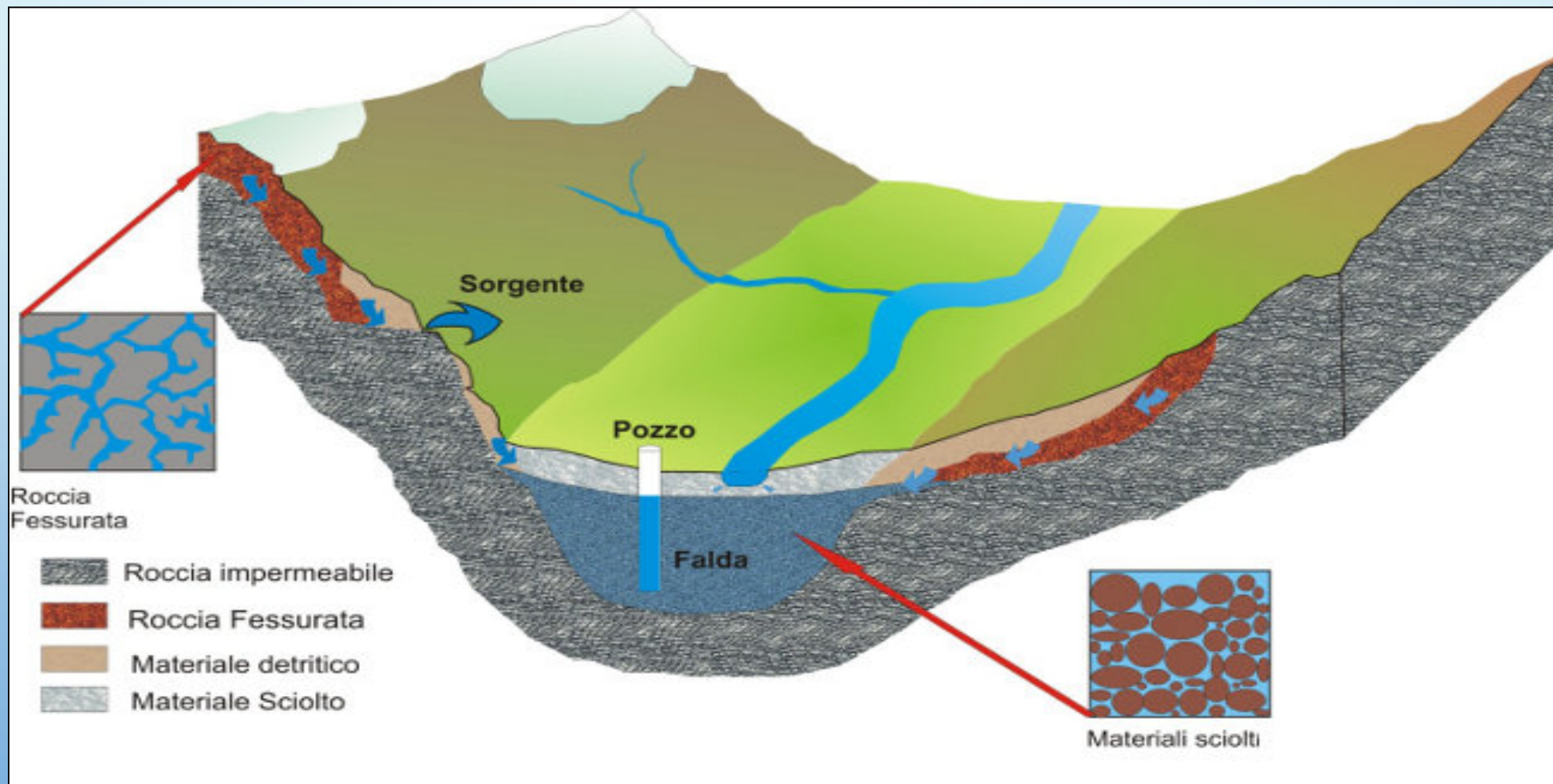
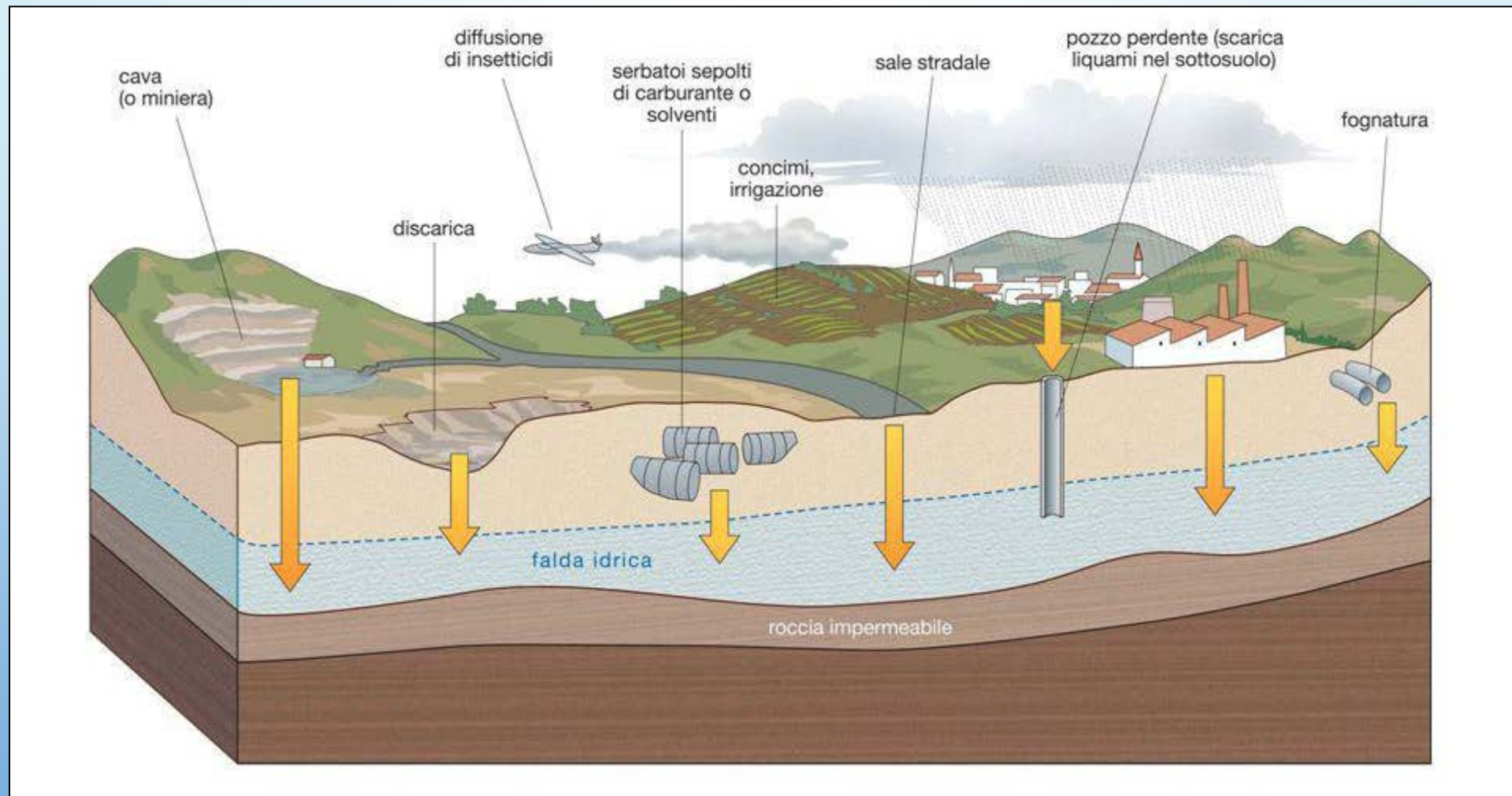


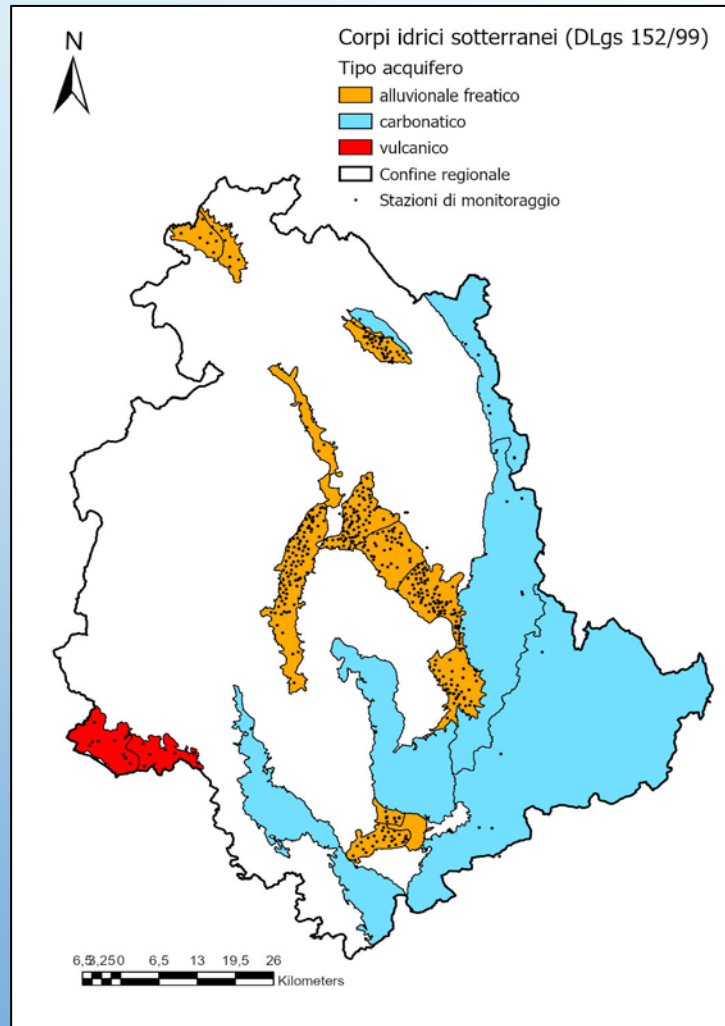
Cosa sono le acque sotterranee?



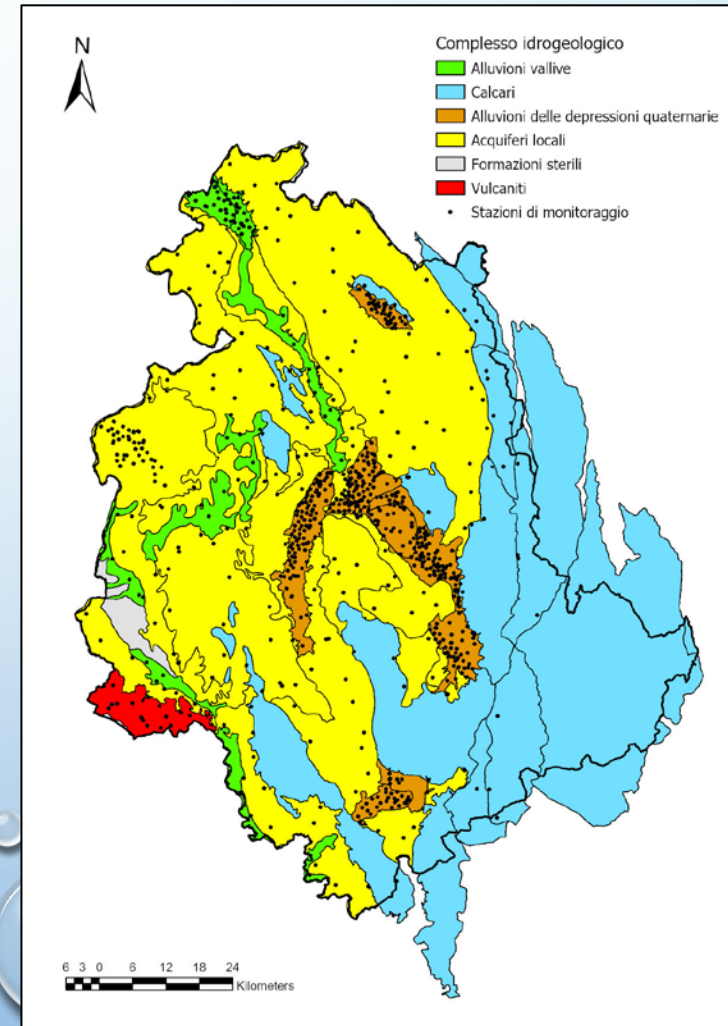
Principali fonti di inquinamento delle acque sotterranee

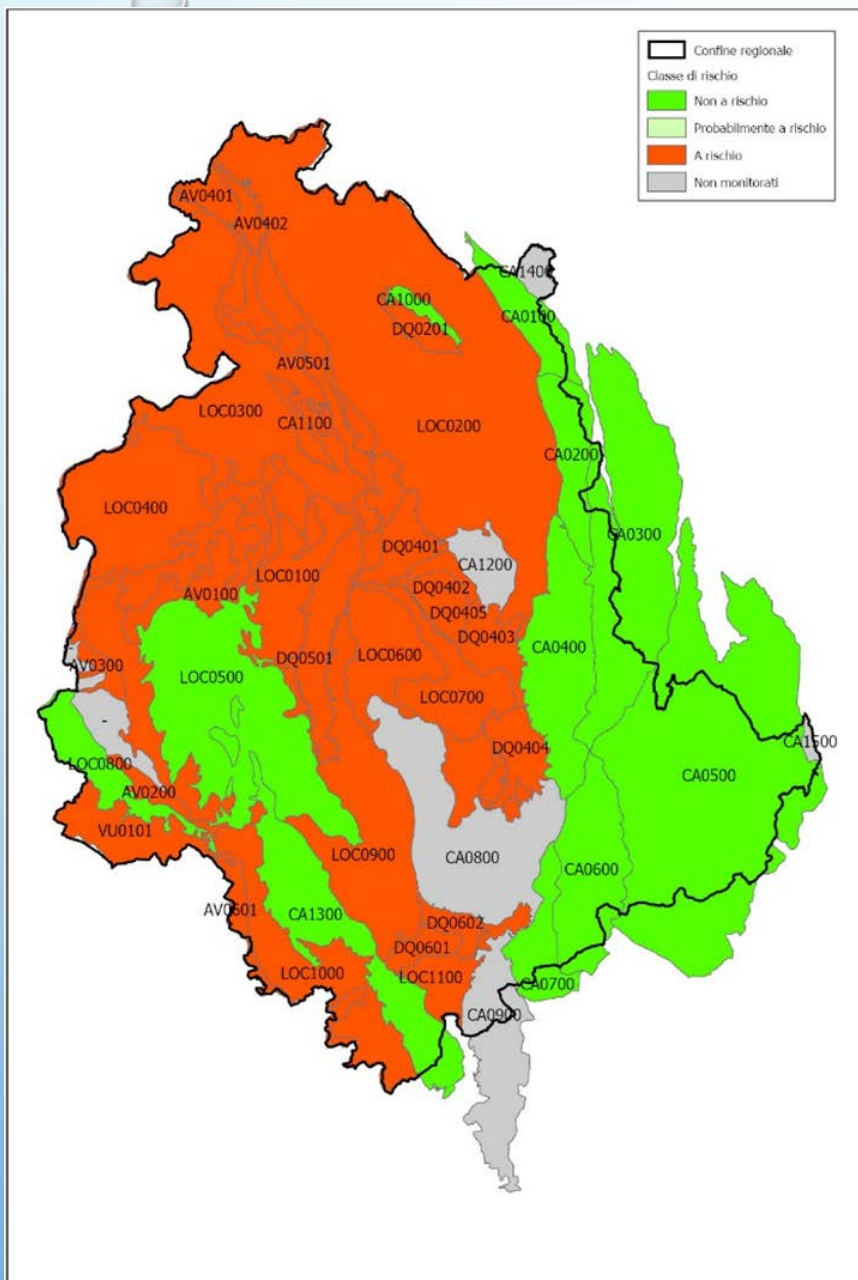


Corpi idrici significativi (DLgs 152/99)



Corpi idrici significativi (DLgs 30/09)





Condizione di rischio dei corpi idrici sotterranei dell'Umbria

38 Corpi Idrici monitorati:

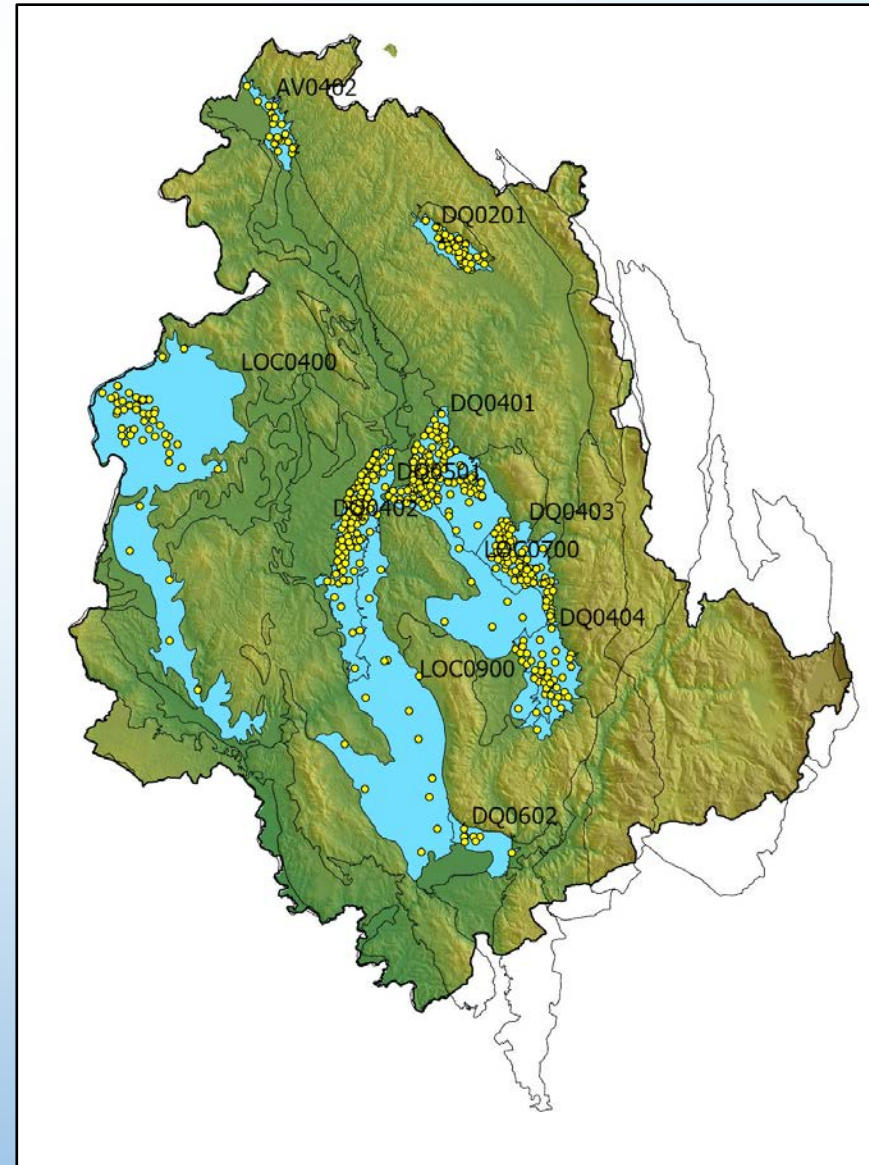
- 27 *a Rischio*
- 11 *non a Rischio*

Rete Fitosanitari Monitoraggio Operativo

10 CORPI IDRICI:

- 1 AV
- 6 DQ
- 3 LOC

100 STAZIONI

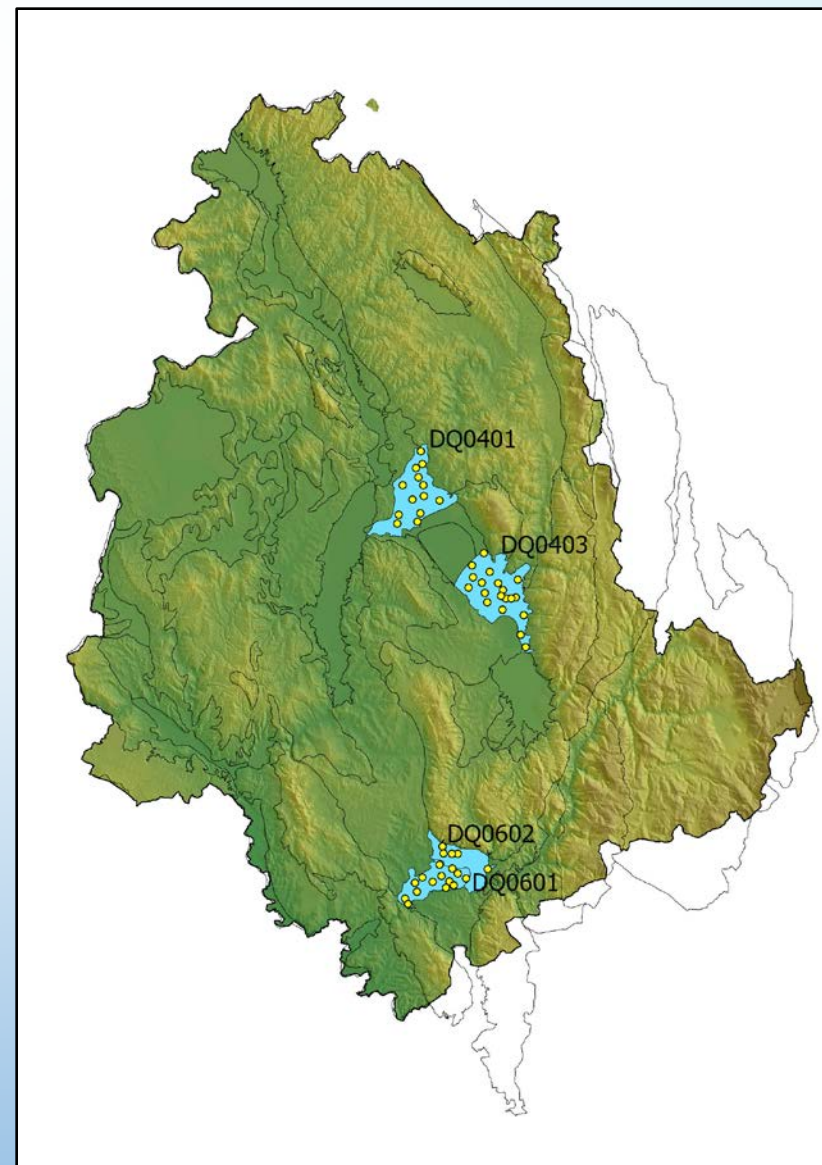


Rete PFAS Monitoraggio Operativo

4 CORPI IDRICI:

- 4 DQ

54 STAZIONI

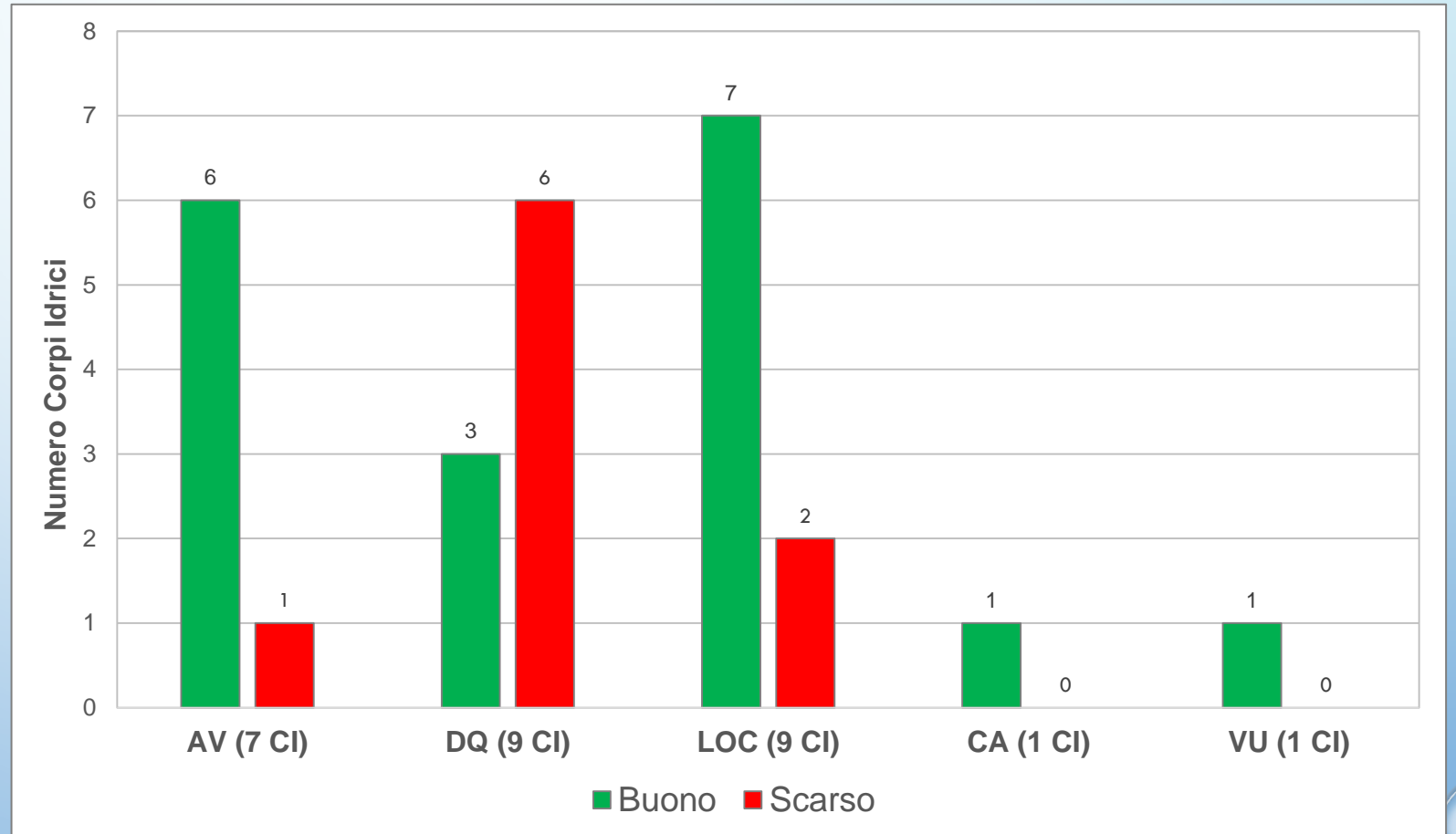


Stato chimico 2018

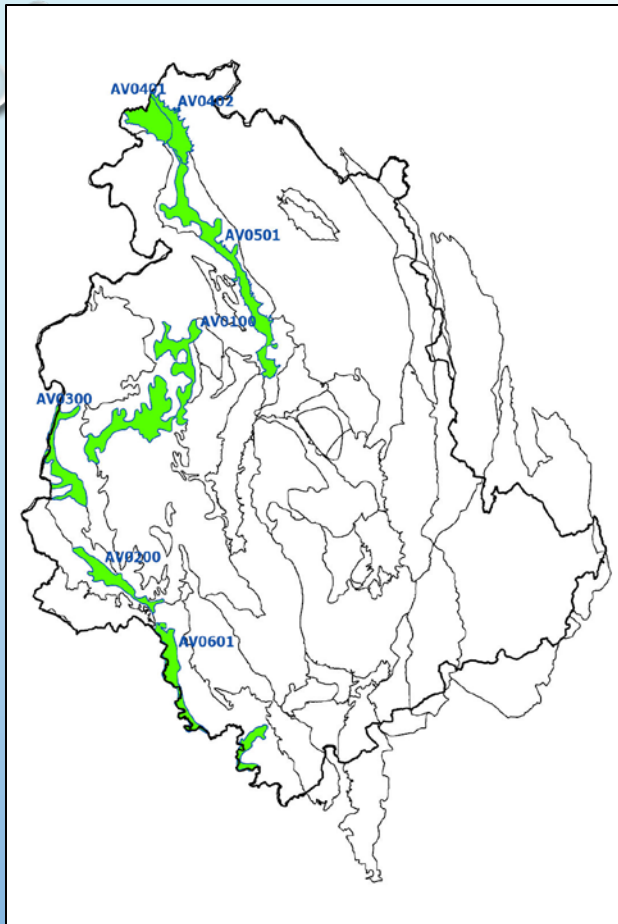
Numero Corpi Idrici monitorati
per Complesso Idrogeologico



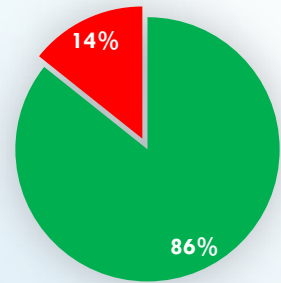
- AV: 7
- DQ: 9
- LOC: 9
- CA: 1
- VU: 1



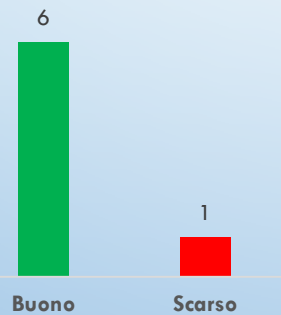
Alluvioni Vallive



Stato Chimico 2018
AV



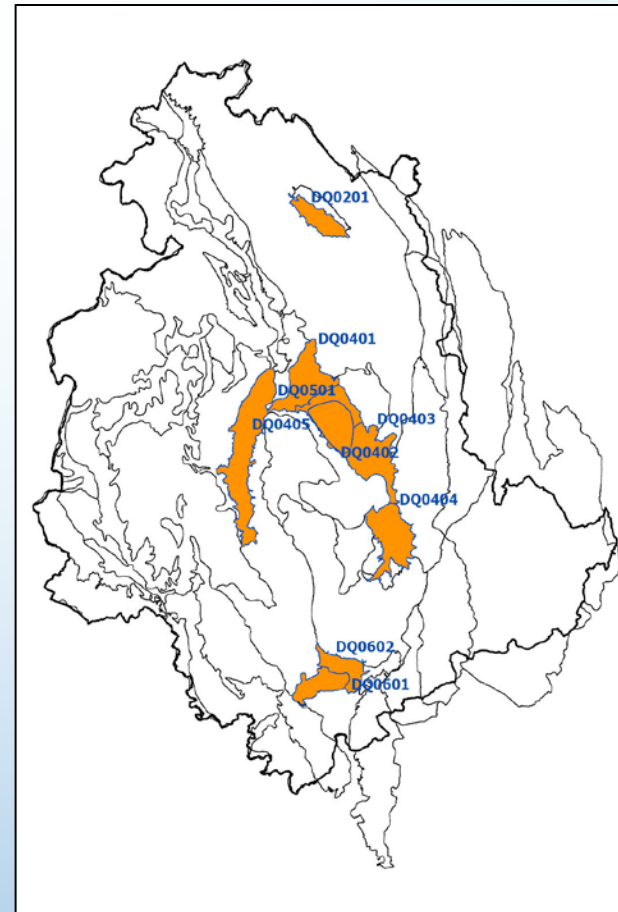
■ Buono ■ Scarso



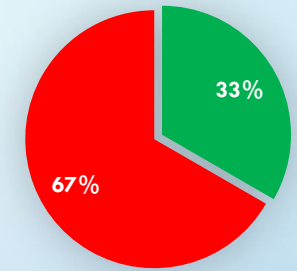
Parametri che determinano lo stato *Scarso*

AV0402: **Nitrati**

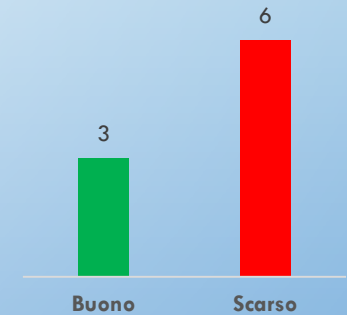
Alluvioni Depressioni Quaternarie



Stato Chimico 2018
DQ



■ Buono ■ Scarso



Parametri che determinano lo stato *Scarso*

DQ0201: **Glifosato**

DQ0403: **Nitrati**

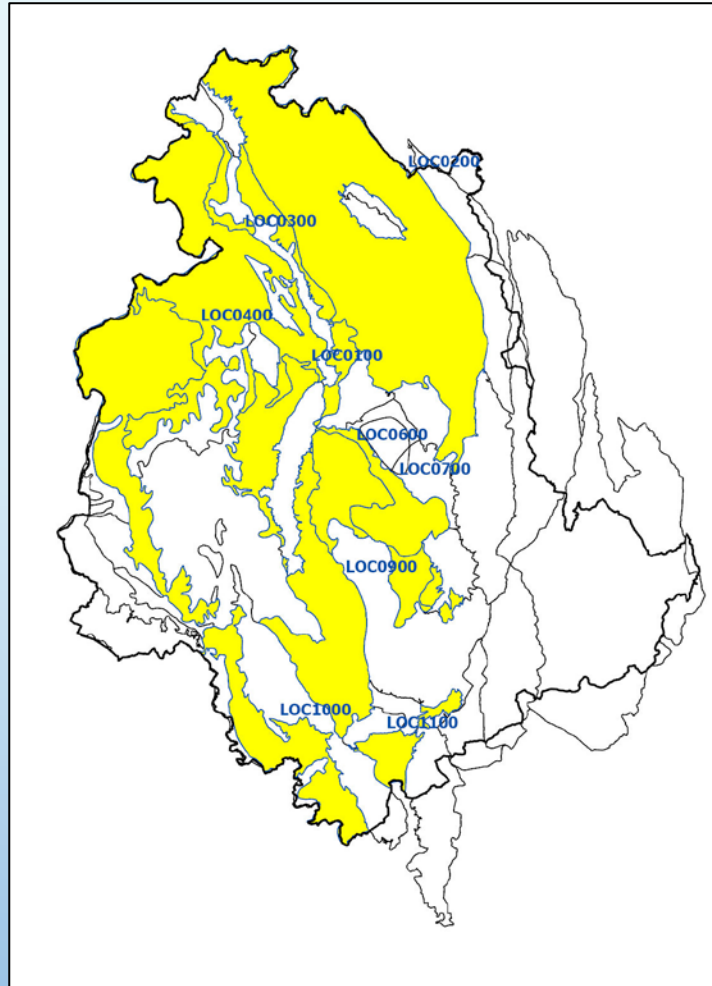
DQ0401: **Nitrati**

DQ0404: **Nitrati**

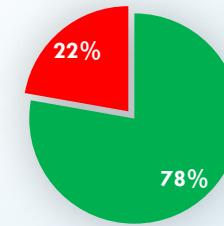
DQ0402: **Nitrati; PCE+TCE**

DQ0501: **Nitrati; PCE+TCE**

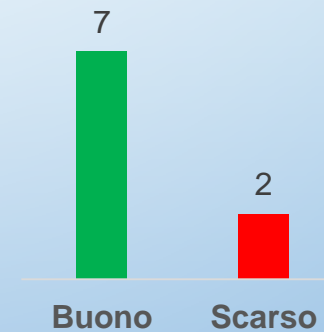
Acquiferi Locali



Stato Chimico 2018
LOC



■ Buono ■ Scarso

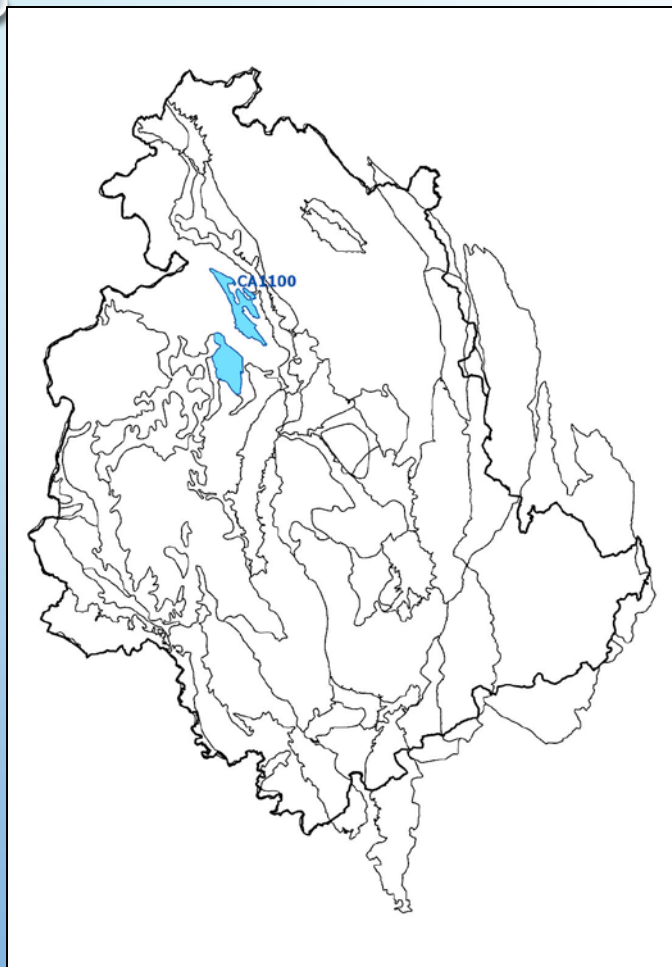


Parametri che determinano lo stato *Scarso*

LOC0400: **Nitrati**

LOC0900: **Nitrati**

Calcari



Vulcanico

